

a COPYRIGHT - These drawings remain the exclusive copyright of ADM ARCHITECTS and shall not be allowed except by express permission granted in writing by ADM ARCHITECTS.		
b FIGURED DIMENSIONS - These drawings are not to be scaled. Figure dimensions shall not be used to determine dimensions.		
c DISCREPANCIES IN DIMENSIONS/POSITIONS/LOCATIONS/FINISHES - The Contractor is to verify any dimensional, location or finish discrepancy with ADM ARCHITECTS prior to any physical construction or setting out. Discrepancies or conflicts shall be resolved by written confirmation from ADM ARCHITECTS. The Contractor shall be responsible for resolving any discrepancies of any such discrepancy or conflict that may arise on site. In conjunction with the full set of consultant's drawings, specifications, reports and DA conditions.		
d A NONINATED ARCHITECT - The nominated Architect for ADM Projects (Australia) Pty Ltd (NS) ADM ARCHITECTS is Appointed (DA) Planning AIB No. 888		
ISSUE	DATE	DESCRIPTION
A	30.05.11	Issued for DA
B	23.09.11	amended for DA approval
C	16.11.11	passing car turning paths indicated

NOT FOR CONSTRUCTION

94 Kentha St, Wollongong NSW 2500 PO Box 3061 Wollongong  
ph: 02 4228 6400 fax: 02 4228 6455 www.admarchitects.com.au

adm

ARCHITECTS

Project  
RESIDENTIAL DEVELOPMENT COMPRISING OF  
15 X 2 BED UNITS, 17 X 3 BED UNITS &  
2 X 3 BED PENTHOUSE UNITS WITH  
7 VISITORS PARKING SPACES &  
BASEMENT PARKING FOR 56 CARS  
At  
LOTS A & B D.P. 415263 LOT 2 D.P. 331687  
No.32 & 34 CHURCH STREET  
WOLLONGONG  
For

PNA DEVELOPMENTS pty ltd

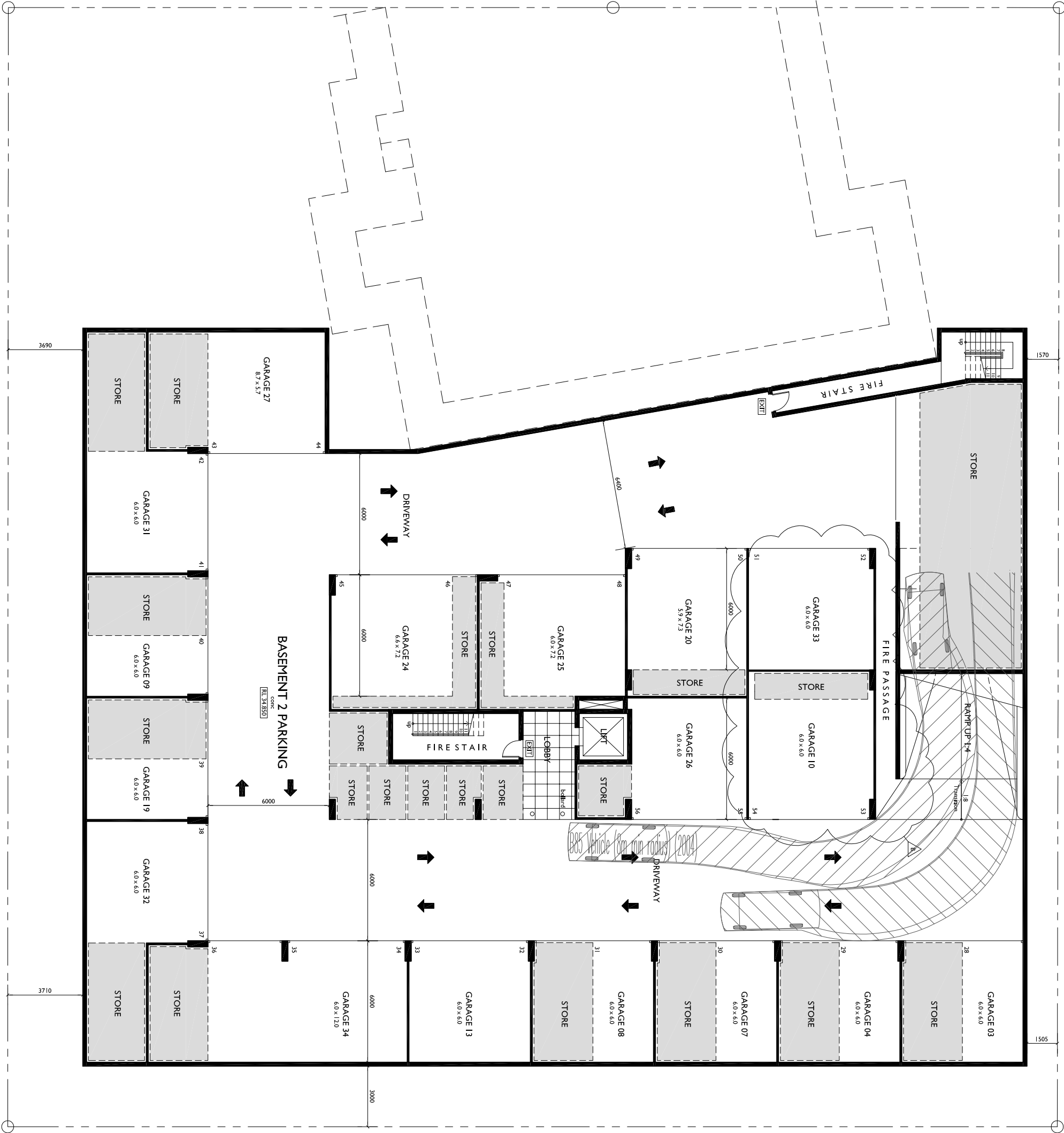
Title  
DEVELOPMENT APPLICATION  
BASEMENT LEVEL 2 PLAN

Scale	Date
1:100@A1	JUNE 2011
1:200@A3	

Drawn	Checked
djm	ADM

Project No.	Drawing No.	Issue
2010-27	A-03	C

Copyright of adm architects



BASEMENT LEVEL 2 PLAN

LEVEL 2 RL 34.850